

# Trimunt's Dental Study Models and Systems For Orthodontic Training

◆ Orthodontic Typodont Kit 【OT-001】



Simple but ample function for any type of orthodontic training. Upper member is easily adjustable for protrusive and lateral movement. Mountable articulator.

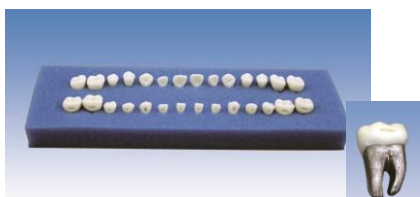
This kit contains any type of wax forms, come with our unique two layered anatomical rooted metal teeth.

◆ Wax Forms【Wax form C1】



Each type of wax form including ideal arch is available, made to order wax form is also available by quantity order.

◆ Metal Teeth 【SIM-MT set】



Anatomically rooted metal teeth overlaid with white resin crown.

Each buccal surface has concave indentations for better bond strength of brackets.

◆ 【DEANA-001】 Transparent jaw models with removable anatomical rooted teeth



Transparent gingivae is soft enough to demonstrate space closing, tooth eruption, tooth anatomy or any type of malocclusion. Anatomical shaped teeth are all removable, it also comes with durable plastic articulator.

◆ Study models for multiple uses



【DEMAL-001】  
Ideal arch



【DEMAL-002】  
Class 1 case



【DEORT-001】  
With metal brackets



【DEORT-003】  
With ceramic brackets

Any type of malocclusion models are available.

Brackets and tubes are applicable on request for your hands on or workshop programs.

Upper and lower jaws come with simple plastic articulator which can be used for occlusal demonstration as well.

◆ Mountable two colored jaw models



【STD32F-HDLA】



【STD28F-HDLA】



【STD32F-UPLA】



【STD28F-UPLA】

Both 28, and 32 teeth type mountable jaw models, useful with our unique quick and easy mounting systems.

Teeth are screw retained. Hard and soft gingiva, both available. Custom made model for your own purpose is acceptable.

For further inquiry:



TEL: +81-75-256-3015 FAX:+81-75-221-8032

E-mail : [info\\_mpro@trimunt.co.jp](mailto:info_mpro@trimunt.co.jp)