

CTG / FGG

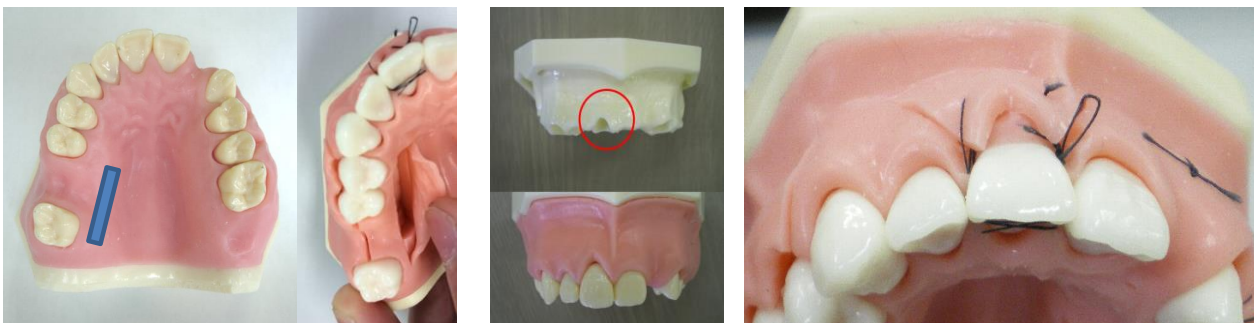
Periodontal Surgery Training Model

It is an essential requirement to obtain the knowledge and technology of incision and suture in performing the implant practice.



CTG(Collective Tissue Graft) Operation

Take connective tissue from right side of Palate and replant to #11, where bone is absorbed



FGG(Free Gingival Graft) Operation

Take epithelial tissue and karatinized tissue from left side of Palate and replant to #24 and 25 where bone is absorbed and gingivae is retracted.



We are prepare any kind of training models that correspond to the treatment of various implants.
Please use the following contact information or website for more information.

For further inquiry:



TEL: +81-75-693-8837 FAX:+81-75-693-8847
<http://www.trimunt.co.jp/>

-Your partner in building better dental education and training--